

Contrastive Learning of Medical Visual Representations from Paired Images and Text

Yuhao Zhang*

Biomedical Informatics Training Program, Stanford University

YUHAO.ZHANG@STANFORD.EDU

Hang Jiang*

Symbolic Systems Program, Stanford University

HJIAN42@STANFORD.EDU

Yasuhide Miura†

Computer Science Department, Stanford University

YSMIURA@STANFORD.EDU

Christopher D. Manning

Computer Science and Linguistics Departments, Stanford University

MANNING@STANFORD.EDU

Curtis P. Langlotz

Department of Radiology, Stanford University

LANGLOTZ@STANFORD.EDU

Abstract

Learning visual representations of medical images is core to medical image understanding but its progress has been held back by the scarcity of human annotations. Existing work commonly relies on transferring weights from ImageNet pretraining, which is suboptimal due to drastically different image characteristics, or rule-based label extraction from the textual report data paired with medical images, which is inaccurate and hard to generalize. We propose ConVIRT, an alternative unsupervised strategy to learn medical visual representations by exploiting naturally occurring descriptive text. Our new method of pretraining medical image encoders with the paired text data via a bidirectional contrastive objective between the two modalities is domain-agnostic, and requires no additional expert input. We test ConVIRT by transferring our pretrained weights to 4 medical image classification tasks and 2 zero-shot retrieval tasks, and show that it leads to image representations that considerably outperform strong baselines in most settings. Notably, in all 4 classification tasks, our method requires only 10% as much labeled training data as an ImageNet initialized counterpart to achieve better or comparable performance, demonstrating superior data efficiency.

1. Introduction

Medical image understanding has the potential to transform healthcare and has seen rapid progress with deep learning (Gulshan et al., 2016; Esteva et al., 2017; De Fauw et al.,

* The first two authors contributed equally. YZ is now affiliated with AWS AI Labs, while the work was done before his current affiliation. HJ is now affiliated with Massachusetts Institute of Technology.

† YM is now affiliated with FUJIFILM Corporation.

2018; Rajpurkar et al., 2018b). Yet, with expert-level performance achieved only in some specialties and under some circumstances, medical image understanding remains a difficult task, with classifications dependent on subtle visual distinctions in overall similar images. This is further exacerbated by the extreme scarcity of annotated data.

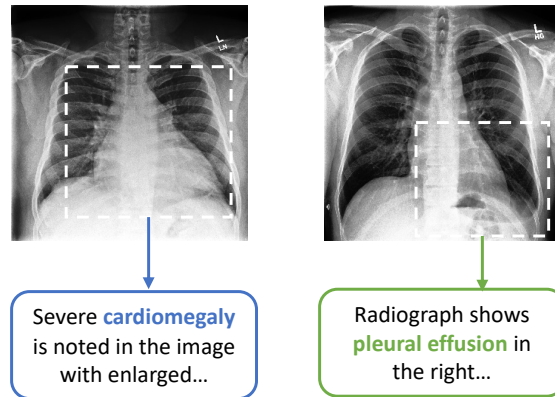


Figure 1: Two example chest X-ray images with different abnormality categories, along with sentences from their paired textual report and example views indicative of their characteristics.

Existing work has followed two general approaches to obtain annotations for medical imaging tasks. The first approach has been using high-quality annotations created by medical experts (Abràmoff et al., 2016; Gulshan et al., 2016; Shih et al., 2019; Wang and Wong, 2020). However, the high cost of this approach has resulted in datasets that are mostly orders of magnitude smaller than natural image datasets such as ImageNet (Russakovsky et al., 2015). To remedy this, existing work has relied heavily on transferring model weights from ImageNet pretraining (Wang et al., 2017; Esteva et al., 2017; Irvin et al., 2019). This approach is suboptimal because, as shown in Figure 1, medical image understanding often requires representations of very fine-grained visual features that are drastically different from those required for identifying objects in natural images. As a result, Raghu et al. (2019) found that ImageNet pretraining often provides little to no benefit compared to simple random initialization.

A second popular approach is to use expert-crafted rules to extract labels from the textual reports accompanying the images. This approach has led to datasets of larger scale, since the text data paired with medical images are often produced naturally by medical experts in their routine workflow and abundant in a typical hospital’s IT systems. Nevertheless, this rule-based label extraction approach has two key limitations: 1) the rules are often inaccurate and limited to a few categories (Wang et al., 2017), leading to very inefficient use of the textual report data; 2) these rules are often domain-specific and sensitive to the style of the text, making cross-domain and cross-institution generalization difficult (Irvin et al., 2019).

In efforts to make more efficient use of unlabeled image data, several recent studies have shown promising results from contrastive representation learning from natural images (Chen et al., 2020a; He et al., 2020; Grill et al., 2020). However, as we will show, applying these

image view-based contrastive methods to medical images provides only marginal benefits compared to ImageNet pretraining, a result mostly due to the high inter-class similarity of the medical images as in Figure 1.

In this work, we improve visual representation learning on medical images by combining the benefits of both learning from abundant textual data and unsupervised statistical approaches. We present *Contrastive Visual Representation Learning from Text (ConVIRT)*, a framework for learning visual representations by exploiting the naturally occurring pairing of images and textual data. ConVIRT improves visual representations by maximizing the agreement between true image-text pairs versus random pairs via a bidirectional contrastive objective between the image and text modalities. We apply ConVIRT to the pretraining of medical image encoders, and show that it leads to higher-quality in-domain image representations that capture the subtlety of visual features required for medical image understanding tasks.

Compared to existing methods, ConVIRT has the advantages of utilizing the paired text data in a way agnostic to the medical specialty and requiring no additional expert input. This allows us to evaluate ConVIRT by transferring our pretrained encoder weights to 4 different medical image classification tasks covering 2 medical specialties. We find that the resulting models outperform all baseline initialization approaches, including the widely used ImageNet pretraining and strong baselines that also utilize the paired text data. It further improves upon popular image-only unsupervised learning methods such as SimCLR (Chen et al., 2020a) and MoCo v2 (Chen et al., 2020b). Most notably, in all 4 classification tasks, ConVIRT requires only 10% as much labeled training data as an ImageNet initialized counterpart to achieve better or comparable performance. We further evaluate ConVIRT on two new zero-shot retrieval tasks, an image-image and a text-image retrieval task, and also find it superior to all baselines.

Since its original release, ConVIRT has directly inspired subsequent studies such as the CLIP framework (Radford et al., 2021) and the ALIGN model (Jia et al., 2021), which showed that direct adaptations of ConVIRT-style pretraining at much larger scales lead to state-of-the-art general visual recognition capabilities. To facilitate future research, we make our model and the collected retrieval datasets¹ publicly available.

1.1. Generalizable Insights about Machine Learning in the Context of Healthcare

Healthcare data is usually scarce and costly to annotate compared to data in the general domain. As a result, machine learning models built with a single modality of healthcare data often face the generalization challenge due to small sample sizes of training data. Meanwhile, healthcare data is often naturally paired with multimodal clinical features, including text descriptions or patient metadata, which can be exploited to reduce the cost of building reliable machine learning models. Our method, ConVIRT, demonstrates an application of this idea to learning robust medical image encoders by reusing descriptive text naturally produced by experts via a cross-modality learning framework. We show that this simple method can largely benefit downstream predictive tasks with reduced annotation cost. Since the release of our work, a similar image-text pretraining strategy has been

1. <https://github.com/yuhaozhang/convirt>

generalized to improve more downstream healthcare tasks including image regeneration (Wang et al., 2021), medical visual question answering (Eslami et al., 2021) and clinical risk prediction (Zang and Wang, 2021), etc. Moreover, a similar idea can be extended to include other modalities of healthcare data, including multiomics (Han et al., 2021) data or patient metadata (Vu et al., 2021), for more robust and cost-effective machine learning applications in the healthcare domain.

2. Related Work

Our work is most relevant to work on medical image classification, which we have discussed in Section 1, and textual report generation from medical images (Wang et al., 2018; Jing et al., 2018; Liu et al., 2019; Miura et al., 2021). A dominant approach for initializing medical image encoders in relevant studies has been using encoder weights pretrained on ImageNet, despite the drastic difference in image characteristics (Raghu et al., 2019). Instead, we propose an alternative in-domain pretraining strategy for medical imaging and compare different pretraining approaches that also use the paired medical reports. To our knowledge, our work represents the first systematic attempt in this direction.

Our work is inspired by the recent line of work on image view-based contrastive learning (Hénaff et al., 2020; Chen et al., 2020a; He et al., 2020; Grill et al., 2020; Sowrirajan et al., 2021; Azizi et al., 2021), but differs from existing studies by the contrastive learning with text modality, which as we show in Section 6, is more effective in learning high-quality representations of medical images.

Another line of work related to ours is visual-linguistic representation learning (Lu et al., 2019; Tan and Bansal, 2019; Su et al., 2020). Among existing studies, Ilharco et al. (2021) and Gupta et al. (2020) explored cross-modality contrastive objectives related to ours, but for the purpose of probing visual-linguistic models and learning phrase grounding, respectively. Our work differs from most work in visual-linguistic pretraining in several crucial ways: 1) existing work in visual-linguistic learning focused on learning visual representations from paired text via a binary contrastive prediction task, whereas we contribute by showing the superior performance of the new cross-modality NCE objectives in improving visual representations; 2) existing work has primarily relied on object representations extracted from image segmentation models in their preprocessing steps, making them less applicable to medical image understanding tasks where anatomical segmentations are extremely hard to obtain; 3) while existing work has run evaluation primarily on visual-linguistic tasks such as visual question answering, we instead focus on evaluation with classification and retrieval tasks which are at the center of medical image understanding research.

Several concurrent papers have studied the problem of learning visual representations from text data (Sariyildiz et al., 2020; Desai and Johnson, 2021) on general-domain image problems. Most notably, since the original release of our work, ConVIRT has been applied at larger scales in several general visual recognition studies, including the CLIP model (Radford et al., 2021), which uses a simplified version of the ConVIRT approach, and the ALIGN model by Jia et al. (2021). These successful applications have confirmed that ConVIRT is a promising strategy for learning visual representations from human-written descriptive text, and that it has the potential to further advance the state of the art for visual recognition tasks.

Besides, there are also subsequent studies which mainly focused on medical-domain image problems. To the best of our knowledge, ConVIRT is the first work that leverages text-image contrastive loss for pretraining medical visual representations and is followed by numerous papers (Heiliger et al., 2022) to apply multimodal contrastive learning to the medical imaging domain. Wang et al. (2021) demonstrated the feasibility of such a pre-training strategy across mixed data inputs (image-only, text-only, image-text pairs) in three chest X-ray applications (i.e., classification, retrieval, and image regeneration). Müller et al. (2021) proposed a similar method, LoVT, for localized medical imaging tasks. Huang et al. (2021) adapted our method and further proposed GloRIA to contrast image sub-regions and words in the paired report. Liao et al. (2021) trained image and text encoders by encouraging the resulting representations to exhibit high local mutual information. Eslami et al. (2021) proposed PubMedCLIP to better adopt CLIP to the Medical Visual Question Answering (MedVQA) task. Zang and Wang (2021) applied a similar contrastive learning framework to clinical risk prediction based on longitudinal electronic health records. Besides, Han et al. (2021) extended ConVIRT to use radiomics features and contrastive learning for pneumonia detection, and Vu et al. (2021) selected positive pairs coming from views of possibly different images through the use of patient metadata.

3. Methods

3.1. Task Definition

We start by defining our representation learning setting. We assume paired input $(\mathbf{x}_v, \mathbf{x}_u)$ where \mathbf{x}_v represents one or a group of images, and \mathbf{x}_u represents a text sequence which describes the imaging information in \mathbf{x}_v . Our goal is to learn a parameterized image encoder function f_v , which maps an image to a fixed-dimensional vector. We are then interested in transferring the learned image encoder function f_v into downstream tasks, such as classification or image retrieval. In this work, we model the encoder function f_v as a convolutional neural network (CNN).

We note that paired image-text data $(\mathbf{x}_v, \mathbf{x}_u)$ naturally exists for many medical domains. Medical experts such as radiologists produce textual descriptions of images as part of their routine workflow, some of which are also made publicly available (Demner-Fushman et al., 2016; Johnson et al., 2019).

3.2. Contrastive Visual Representation Learning from Text

An overview of our method, ConVIRT, for learning f_v is shown in Figure 2. At a high level, our method converts each input image \mathbf{x}_v and text \mathbf{x}_u into d -dimensional vector representations \mathbf{v} and \mathbf{u} respectively, following a similar processing pipeline. For each input image \mathbf{x}_v , our method starts by drawing a random view $\tilde{\mathbf{x}}_v$ from \mathbf{x}_v with a sampled transformation function $t_v \sim \mathcal{T}$, where \mathcal{T} represents a family of stochastic image transformation functions described later. Next, the encoder function f_v transforms $\tilde{\mathbf{x}}_v$ into a fixed-dimensional vector \mathbf{h}_v , followed by a non-linear projection g_v which further transforms \mathbf{h}_v into vector \mathbf{v} :

$$\mathbf{v} = g_v(f_v(\tilde{\mathbf{x}}_v)), \quad (1)$$

where $\mathbf{v} \in \mathbb{R}^d$. Similarly, for each text input \mathbf{x}_u , we obtain a span $\tilde{\mathbf{x}}_u$ from it following a sampling function t_u , and then a text representation \mathbf{u} with: $\mathbf{u} = g_u(f_u(\tilde{\mathbf{x}}_u))$, where f_u is

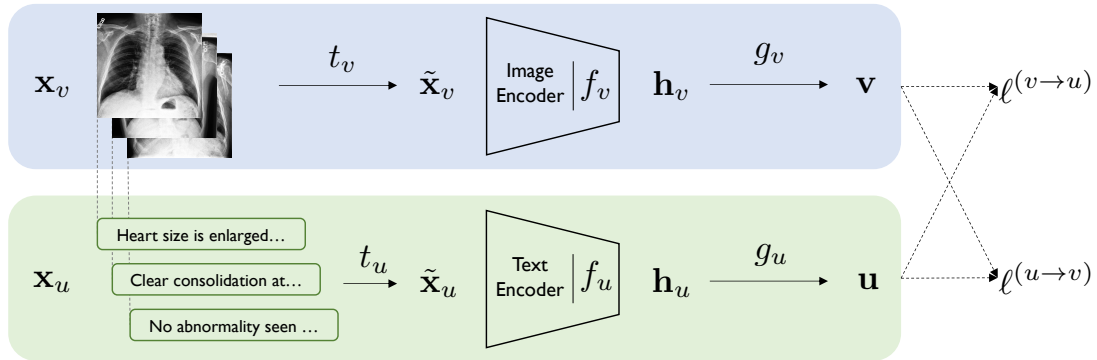


Figure 2: Overview of our ConVIRT framework. The blue and green shades represent the image and text encoding pipelines, respectively. Our method relies on maximizing the agreement between the true image-text representation pairs with bidirectional losses $\ell^{(v \rightarrow u)}$ and $\ell^{(u \rightarrow v)}$.

a text encoder, g_u a projection, and $\mathbf{u} \in \mathbb{R}^d$. The projection functions g_v and g_u project representations for both modalities from their encoder space to the same d -dimensional space for contrastive learning.

At training time, we sample a minibatch of N input pairs $(\mathbf{x}_v, \mathbf{x}_u)$ from training data, and calculate their representation pairs (\mathbf{v}, \mathbf{u}) . We use $(\mathbf{v}_i, \mathbf{u}_i)$ to denote the i -th pair. The training objective of ConVIRT involves two loss functions. The first loss function is an image-to-text contrastive loss for the i -th pair:

$$\ell_i^{(v \rightarrow u)} = -\log \frac{\exp(\langle \mathbf{v}_i, \mathbf{u}_i \rangle / \tau)}{\sum_{k=1}^N \exp(\langle \mathbf{v}_i, \mathbf{u}_k \rangle / \tau)}, \quad (2)$$

where $\langle \mathbf{v}_i, \mathbf{u}_i \rangle$ represents the cosine similarity, i.e., $\langle \mathbf{v}, \mathbf{u} \rangle = \mathbf{v}^\top \mathbf{u} / \|\mathbf{v}\| \|\mathbf{u}\|$; and $\tau \in \mathbb{R}^+$ represents a temperature parameter. This loss takes the same form as the InfoNCE loss (Oord et al., 2018), and minimizing it leads to encoders that maximally preserve the mutual information between the true pairs under the representation functions. Intuitively, it is the log loss of an N -way classifier that tries to predict $(\mathbf{v}_i, \mathbf{u}_i)$ as the true pair. Note that unlike previous work which use a contrastive loss between inputs of the same modality (Chen et al., 2020a; He et al., 2020), our image-to-text contrastive loss is asymmetric for each input modality. We therefore define a similar text-to-image contrastive loss as:

$$\ell_i^{(u \rightarrow v)} = -\log \frac{\exp(\langle \mathbf{u}_i, \mathbf{v}_i \rangle / \tau)}{\sum_{k=1}^N \exp(\langle \mathbf{u}_i, \mathbf{v}_k \rangle / \tau)}. \quad (3)$$

Our final training loss is then computed as a weighted combination of the two losses averaged over all positive image-text pairs in each minibatch:

$$\mathcal{L} = \frac{1}{N} \sum_{i=1}^N \left(\lambda \ell_i^{(v \rightarrow u)} + (1 - \lambda) \ell_i^{(u \rightarrow v)} \right), \quad (4)$$

where $\lambda \in [0, 1]$ is a scalar weight.

3.3. Realization

We note that our ConVIRT framework defined above is agnostic to the specific choice of image and text encoders, transformations and projection functions. Following previous work (Chen et al., 2020a), we model g_v and g_u as separate learnable single-hidden-layer neural networks, i.e., $g_v(\cdot) = \mathbf{W}^{(2)}\sigma(\mathbf{W}^{(1)}(\cdot))$ where σ is a ReLU non-linearity, and similarly for g_u .

For the image encoder f_v , we use the ResNet50 architecture (He et al., 2016) for all experiments, as it is the architecture of choice for much medical imaging work and is shown to achieve competitive performance. For the text encoder f_u , we use a BERT encoder (Devlin et al., 2019) followed by a max-pooling layer over all output vectors. We initialize our encoder with the ClinicalBERT weights (Alsentzer et al., 2019) pretrained on the MIMIC clinical notes, which achieved state-of-the-art performance on a suite of clinical NLP tasks. At training time we allow the encoder to adapt to our contrastive task by freezing the embeddings and the first 6 transformer layers of this BERT encoder and fine-tuning the last 6 layers.

For the image transformation family \mathcal{T} where t_v is sampled from, we use sequential applications of five random transformations: *cropping*, *horizontal flipping*, *affine transformation*, *color jittering* and *Gaussian blur*. Different from recent work on contrastive visual learning (Chen et al., 2020a,b), we only apply brightness and contrast adjustments in *color jittering*, due to the monochrome nature of the medical images. For the text transformation function t_u , we apply a simple uniform sampling of a sentence from the input document \mathbf{x}_u (i.e., $\tilde{\mathbf{x}}_u$ is a randomly sampled sentence from \mathbf{x}_u for each minibatch). We did not use a more aggressive transformation mainly because sampling at the sentence level helps preserve the semantic meaning of the sampled spans.

An alternative method to using the sampled view $\tilde{\mathbf{x}}_v$ from \mathbf{x}_v as input to the encoder is to directly use \mathbf{x}_v or to fuse all images for each study in the case of multiple available \mathbf{x}_v instances (e.g., images from multiple angles). We empirically found in our preliminary experiments that using sampled view $\tilde{\mathbf{x}}_v$ leads to better pretraining results. We conjecture that we can treat the use of $\tilde{\mathbf{x}}_v$ as a way of data augmentation for the visual modality, which helped increase the effective amount of unique image-text pairs that the model sees at pretraining time, leading to better performance.

4. Experiments

We now introduce the paired datasets that we used for contrastive pretraining, the downstream tasks and datasets for evaluation, and the baseline methods that we compare against.

4.1. Data for Pretraining

We evaluate ConVIRT by pretraining two separate image encoders using two separate image-text datasets (see Appendix A for full pretraining details):

- **Chest** image encoder: We use version 2 of the public **MIMIC-CXR** database (Johnson et al., 2019), which is a collection of chest radiograph images paired with their textual reports, and since its release has become a standard resource for studying multi-modal

modeling of medical images. After preprocessing, this dataset contains a total of about 217k image-text pairs, with each pair containing an average of 1.7 images and 6.0 sentences.

- **Bone** image encoder: We obtain a collection of musculoskeletal (i.e., bone) image-text pairs from the Rhode Island Hospital system. Following chest, musculoskeletal images constitute the second most common type of radiograph images in a typical hospital. This dataset contains a total of 48k image-text pairs, with each pair containing an average of 2.5 images and 8.0 sentences.

4.2. Evaluation Tasks & Data

We evaluate our pretrained image encoders on three medical imaging tasks: image classification, zero-shot image-image retrieval and zero-shot text-image retrieval.

Image Classification. We evaluate our pretrained image encoders on four representative medical image classification tasks: 1) **RSNA Pneumonia Detection** (Wang et al., 2017; Shih et al., 2019), which involves binary classification of a chest radiograph image into either a *pneumonia* or a *normal* category; 2) **CheXpert** image classification (Irvin et al., 2019), which involves multi-label binary classification of a chest image for five individual labels, i.e., *atelectasis*, *cardiomegaly*, *consolidation*, *edema* and *pleural effusion*; 3) **COVIDx** (Wang and Wong, 2020), which involves multi-class chest image classification into three categories (*COVID19*, *non-COVID pneumonia* or *normal*); and 4) **MURA** bony abnormality detection (Rajpurkar et al., 2018a), which involves binary classification of a musculoskeletal image into *abnormal* or *normal*. We report test accuracy for COVIDx given its balanced test set, and report the standard area under the receiver operating characteristic curve (AUC) metric for other tasks.

Following previous work (Hénaff et al., 2020; Chen et al., 2020a; He et al., 2020), for all tasks, we evaluate each pretrained image encoder under two settings: a **linear classification** setting, where the pretrained CNN weights are frozen and only a linear classification head is trained for the task; and a **fine-tuning** setting, where both the CNN weights and the linear head are fine-tuned. The two settings complement each other for evaluation purposes: while the linear setting directly evaluates the quality of the extracted image features with the pretrained CNN, the fine-tuning setting more closely resembles how the pretrained CNN weights are used in practical applications.

To further compare the **data efficiency** of different pretraining methods, for each setting we evaluate the image encoders with **1%**, **10%** and **all** training data, respectively (except for the COVIDx task where we omit the 1% setting due to the scarcity of training data). To control the variance in results, for all settings and models, we report **average results** over 5 independent training runs. We include further dataset and training details in Appendix B.

Zero-shot Image-image Retrieval. This evaluation is similar to the conventional content-based image retrieval setting in which we search for images of a particular category using a representative *query* image. For evaluation, a group of query images and a larger collection of *candidate* images, each with a categorical label, are given to a pretrained CNN encoder. We encode each query and candidate image with this encoder, and then for each query,

(a) Linear classification											
Method	RSNA (AUC)			CheXpert (AUC)			COVIDx (Accu.)		MURA (AUC)		
	1%	10%	all	1%	10%	all	10%	all	1%	10%	all
<i>General initialization methods</i>											
Random Init.	55.0	67.3	72.3	58.2	63.7	66.2	69.2	73.5	50.9	56.8	62.0
ImageNet Init.	82.8	85.4	86.9	75.7	79.7	81.0	83.7	88.6	63.8	74.1	79.0
<i>In-domain initialization methods</i>											
Caption-Transformer	84.8	87.5	89.5	77.2	82.6	83.9	80.0	89.0	66.5	76.3	81.8
Caption-LSTM	89.8	90.8	91.3	85.2	85.3	86.2	84.5	91.7	75.2	81.5	84.1
Contrastive-Binary-Loss	88.9	90.5	90.8	84.5	85.6	85.8	80.5	90.8	76.8	81.7	85.3
ConVIRT (Ours)	90.7	91.7	92.1	85.9	86.8	87.3	85.9	91.7	81.2	85.1	87.6
(b) Fine-tuning											
Method	RSNA (AUC)			CheXpert (AUC)			COVIDx (Accu.)		MURA (AUC)		
	1%	10%	all	1%	10%	all	10%	all	1%	10%	all
<i>General initialization methods</i>											
Random Init.	71.9	82.2	88.5	70.4	81.1	85.8	75.4	87.7	56.8	61.6	79.1
ImageNet Init.	83.1	87.3	90.8	80.1	84.8	87.6	84.4	90.3	72.1	81.8	87.0
<i>In-domain initialization methods</i>											
Caption-Transformer	86.3	89.2	92.1	81.5	86.4	88.2	88.3	92.3	75.2	83.2	87.6
Caption-LSTM	87.2	88.0	91.0	83.5	85.8	87.8	83.8	90.8	78.7	83.3	87.8
Contrastive-Binary-Loss	87.7	89.9	91.2	86.2	86.1	87.7	89.5	90.5	80.6	84.0	88.4
ConVIRT (Ours)	88.8	91.5	92.7	87.0	88.1	88.1	90.3	92.4	81.3	86.5	89.0

Table 1: Results for the medical image classification tasks: (a) linear classification; (b) fine-tuning setting. All results are averaged over 5 independent models. Best results for each setting are in boldface. COVIDx 1% setting is omitted due to the scarcity of labels in COVIDx.

rank all candidates by their cosine similarities to the query in descending order. Since a widely-used annotated benchmark for this setting is not available, we create our own dataset by re-using existing annotations in the CheXpert dataset (Irvin et al., 2019) and additional expert annotations from a board-certified radiologist. The resulting dataset covers 8 different chest abnormality categories, each with 10 expert-annotated query and 200 candidate images. We include the detailed collection and annotation procedure in Appendix C, and refer to this dataset as **CheXpert 8×200 Retrieval Dataset**. We focus our evaluation on retrieval precision, and evaluate our models with Precision@ k metrics where $k = 5, 10, 100$.

Zero-shot Text-image Retrieval. This setting is similar to the image-image retrieval setting, but instead of using query images, we retrieve images of a particular category with textual queries. For this purpose, we ask a radiologist to write 5 diverse and representative textual descriptions for each of the 8 abnormality categories for the same CheXpert 8x200 candidate images (see Appendix D for details). At test time, for each query we encode its text with the learned text encoder f_u and then retrieve from candidate images in a similar way. This evaluation not only evaluates the quality of the learned image representations, but also the alignment between the text representations and the image representations. We again use Precision@ k metrics where $k = 5, 10, 100$.

4.3. Baseline Methods

We compare ConVIRT against the following standard or competitive initialization methods:

- **Random Init.:** For all tasks we initialize the ResNet50 with its default random initialization.
- **ImageNet Init.:** We use CNN weights pretrained on ImageNet (Russakovsky et al., 2015), which remains a dominant initialization approach for medical imaging work (Raghu et al., 2019).
- **Caption-LSTM:** We further pretrain the ImageNet-initialized CNN weights with an image captioning task using the standard CNN-LSTM with attention model (Xu et al., 2015). We train the model to decode the paired medical report text from the encoded image representations. Compared to the random or ImageNet initializations, this is an “in-domain” initialization baseline which uses the paired text data for representation learning.
- **Caption-Transformer:** We use a CNN-Transformer-based captioning model (Cornia et al., 2020) for caption-based pretraining, which recently achieves state-of-the-art results on the COCO image captioning benchmark (Lin et al., 2014).
- **Contrastive-Binary-Loss:** This baseline differs from ConVIRT by contrasting the paired image and text representations with a binary classification head, as is widely done in visual-linguistic pretraining work (Tan and Bansal, 2019; Su et al., 2020). For each input pair, we first project encoder outputs \mathbf{h}_v and \mathbf{h}_u into the same dimension with linear layers, concatenate them, and use a MLP network to predict a binary probability of whether the input is a real or a “fake” pair, which we train with a binary cross-entropy loss. During training, for each $(\mathbf{x}_v, \mathbf{x}_u)$ pair in the training set, we construct a “fake” pair by replacing \mathbf{x}_u with a randomly sampled one from the dataset. We expect that the binary classification task requires the encoder to learn reasonable representations of the input images, and therefore is a stronger in-domain initialization baseline.

For fair comparison, for all baselines that require paired image-text data, we use the same datasets as in our contrastive pretraining. For the captioning-based methods, we always use the model checkpoints that achieve the best CIDEr score (Vedantam et al., 2015) on a held-out validation set.

5. Results

5.1. Classification Tasks

Linear Classification. We present all linear classification results for the four tasks in Table 1(a). We find that compared to random initialization, ImageNet initialization provides markedly better representations, despite pretrained on a very different domain of images; in-domain image initialization methods that use paired image-text data further improve over ImageNet initialization in almost all settings. Among the in-domain initialization methods, our proposed ConVIRT pretraining achieves the best overall results in all settings. Notably, we find on three out of the four tasks, with only 1% training data ConVIRT is able to achieve classification results better than the default ImageNet initialization with 100% training data, highlighting the high quality of the learned representations from ConVIRT.

Method	Image-Image Retrieval			Text-Image Retrieval		
	Prec@5	Prec@10	Prec@50	Prec@5	Prec@10	Prec@50
Random	12.5	12.5	12.5	12.5	12.5	12.5
ImageNet	14.8	14.4	15.0	–	–	–
<i>In-domain initialization methods</i>						
Caption-Transformer	29.8	28.0	23.0	–	–	–
Caption-LSTM	34.8	32.9	28.1	–	–	–
Contrastive-Binary-Loss	38.8	36.6	29.7	15.5	14.5	13.7
ConVIRT (Ours)	45.0	42.9	35.7	60.0	57.5	48.8
<i>Fine-tuned</i>						
ConVIRT + CheXpert Supervised	56.8	56.3	48.9	–	–	–

Table 2: Zero-shot image-image and text-image retrieval results on the CheXpert 8×200 datasets. *Random* shows results from a random guess; *ConVIRT + CheXpert Supervised* shows results from further fine-tuning the pretrained weights with supervised training data. Text-image retrieval results are not obtained for some methods due to the lack of text encoders.

Fine-tuning. We show the fine-tuning evaluation results in Table 1(b). Similar to the linear setting, we find that: 1) ImageNet initialization is again better than random initialization with smaller margins; 2) all in-domain initialization methods are better than the popular ImageNet initialization in most settings; and 3) our proposed ConVIRT pretraining again achieves the best overall results in 10 out of the 11 settings, with the exception of the CheXpert dataset with all training data used, where the result of ConVIRT is similar to that of the Caption-Transformer result. Most notably, on all datasets, with only 10% labeled training data ConVIRT achieves classification results that are better or close to the ImageNet initialization with 100% training data results.

We also notice that our conclusion of using ImageNet versus random initialization is different from (Raghu et al., 2019): while they showed comparable results from the two strategies, we find that using ImageNet initialization is still superior than random initialization in most results, justifying its popularity. Upon closer examination, we conjecture that this is likely due to under-optimization of their models: while our ResNet50 with random initialization achieves an average AUC of 85.8 on the CheXpert dataset, their ResNet50 model only achieved 83.5 AUC on the same evaluation set.

5.2. Retrieval Tasks

We present the zero-shot image-image and text-image retrieval results in Table 2. For the image-image retrieval setting, we present additional results from fine-tuning our pretrained model on all CheXpert training data, and use them as “upper bounds” of the results obtained from the use of supervised labels. We find that: 1) using ImageNet weights in a zero-shot image retrieval setting is only better than random guess by small margins; 2) all in-domain pretrained CNN weights achieve much better retrieval performance than ImageNet weights; and 3) our proposed ConVIRT pretraining achieves the best overall retrieval results on all metrics. While Contrastive-Binary-Loss performs notably better than other

baselines in image-image retrieval, its text-image retrieval results are far from ConVIRT pretraining. We conjecture that the lack of an explicit similarity-based loss function in the Contrastive-Binary-Loss baseline results in misaligned representations in the image and text space, leading to poor results in text-image retrieval.

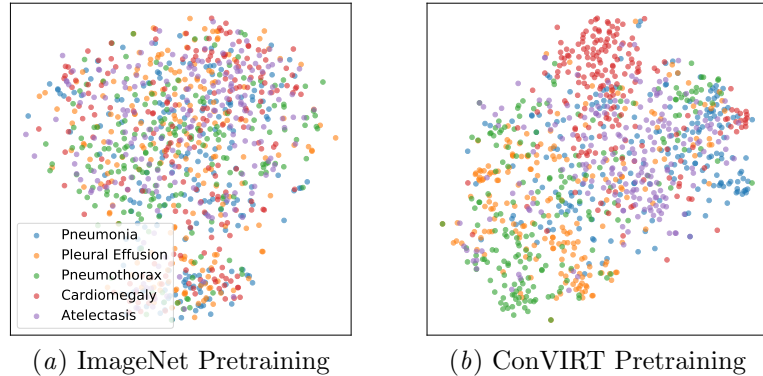


Figure 3: t-SNE visualizations of encoded image representations from different pretraining methods.

To understand how well ConVIRT pretraining helps separate images from different abnormality categories in its encoding space, in Figure 3 we present t-SNE plots (Maaten and Hinton, 2008) of candidate images in the CheXpert 8x200 dataset for five selected categories, from the ImageNet pretrained CNN encoder and the ConVIRT pretrained encoder. It is worth noting that clustering images in our setting is much more challenging than that in the general object classification setting due to the high inter-class similarity of the medical images. Nevertheless we find that ConVIRT pretraining achieves a better clustering of the images in the t-SNE plots.

6. Analysis and Discussion

Comparisons to Image-only Contrastive Learning. ConVIRT shows superior results against baselines in evaluation, but an important question remains as to how it compares against existing image-only contrastive learning methods. We study this by running two popular such methods, SimCLR (Chen et al., 2020a) and MoCo v2 (Chen et al., 2020b), on the same collection of images that we used in our pretraining. We present the results in Table 3 and include training details in Appendix E. We find that compared to ImageNet initialization, both contrastive methods lead to marginal to moderate improvements on the classification and retrieval tasks. However, our training strategy substantially outperforms both methods on all tasks, demonstrating its effective use of information from the paired text data. This efficient use of data is critical to the healthcare domain because medical data are often limited in size but come with paired text data and even user metadata.

To understand the representational difference that has led to this difference in performance, for all four initialization methods, we visualize in Figure 4 the saliency maps (Simonyan et al., 2014) corresponding to the correct class on sampled images from the CheXpert dataset. Models for all initialization methods are trained with 1% CheXpert

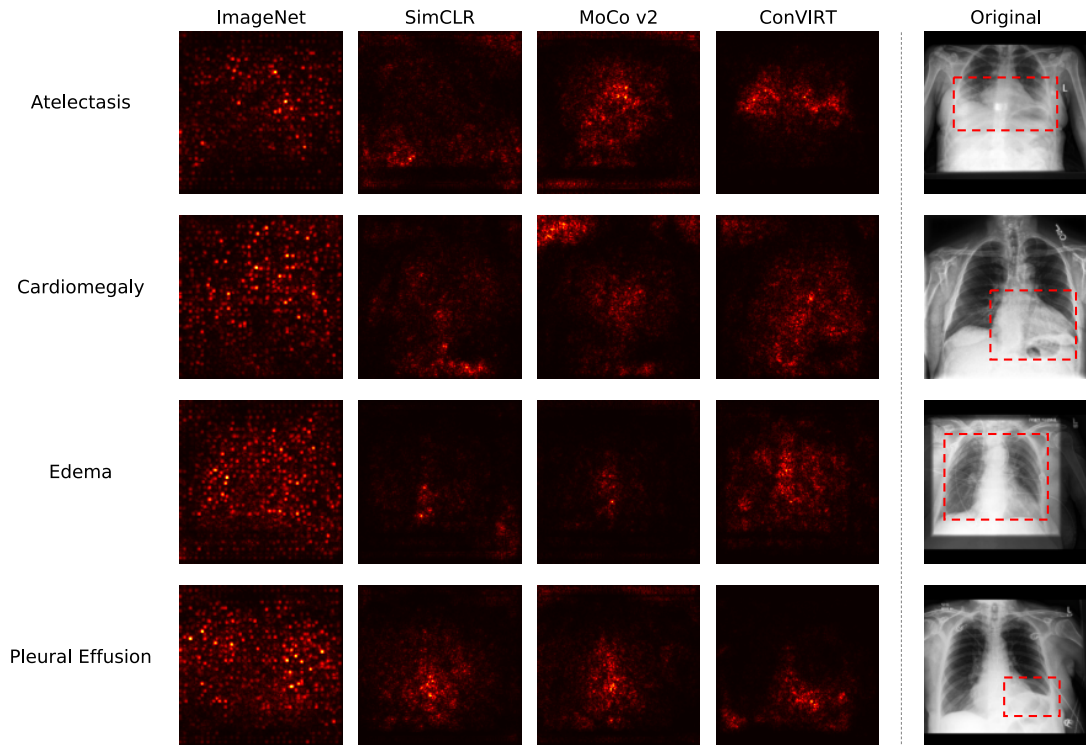


Figure 4: Saliency maps on sampled images for 4 abnormality categories in the CheXpert dataset. For each image we present maps for ImageNet, SimCLR, MoCo v2 and our ConVIRT initializations. Ground truth regions that are indicative of the abnormalities are shown as red boxes in the original images on the right, and are seen to most closely match the regions found by ConVIRT.

Method	RSNA (Linear, 1%)	CheXpert (Linear, 1%)	Image-Image (Prec@10)
ImageNet	82.8	75.7	14.4
SimCLR (Chen et al., 2020a)	86.3	77.4	17.6
MoCo v2 (Chen et al., 2020b)	86.6	81.3	20.6
ConVIRT	90.7	85.9	42.9

Table 3: Comparisons of ConVIRT to image-only contrastive learning. For RSNA and CheXpert we show the AUC under linear classification with 1% training data.

training data under the linear classification setting (with pretrained CNN weights frozen). We find that ImageNet pretraining has led to models that focus on trivial visual features that are mostly irrelevant to the task, and that the model with ConVIRT pretrained weights has focused on much more relevant areas than those with SimCLR and MoCo v2 pretraining, suggesting more effective representation learning. For example, for *atelectasis*, while

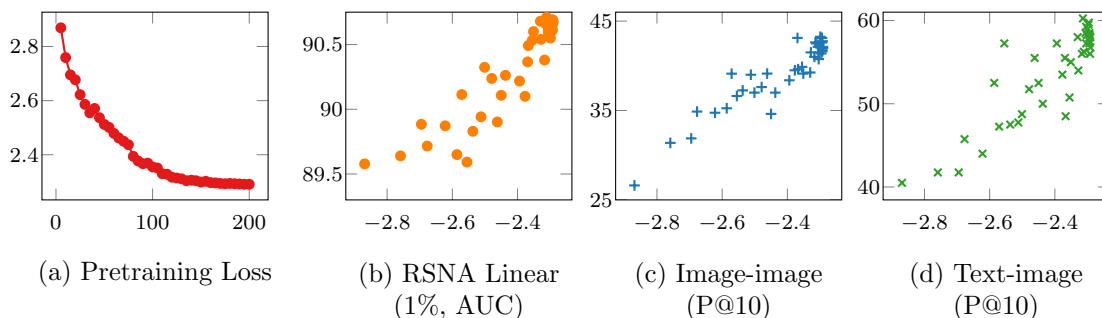


Figure 5: (a) shows pretraining validation loss at different epochs; (b)-(d) shows correlation between the pretraining loss and the performance of three end tasks. For (a) the x-axis shows the training epoch number, and for (b)-(d) the x-axis shows the negative value of the pretraining loss (i.e., $-\mathcal{L}$) on a held-out validation set.

the ConVIRT model has correctly focused on the bottom of the lung regions, the SimCLR model has much more scattered focus and the MoCo model has incorrectly focused on the heart region.

Correlation Between Contrastive Loss and End Task Performance. To understand the relation between a model’s performance on the ConVIRT pretraining task and its performance on the downstream tasks, we ran an analysis where for every 5 epochs during the pretraining, we transferred the pretrained checkpoint to the downstream tasks and evaluate its performance. The pretraining was run for a total of 200 epochs, and 40 points were obtained with varying validation loss and end task results. Figure 5 presents the results of the models’ validation loss on the pretraining task, and its achieved performance on the RSNA 1% data linear evaluation and the two retrieval tasks. For all three tasks, we find a clear positive correlation between the pretraining performance and the end task performance. This corroborates that by learning with the ConVIRT objectives, the image encoder learns gradually improved representations for the end tasks, and suggests that further improvement on the pretraining task may have positive impact on the end task performance.

Hyperparameter Analysis. We run experiments to study the impact of hyperparameters, and have the following observations. First of all, similar to previous work on image-only contrastive learning (Chen et al., 2020a; He et al., 2020), the pretraining results are most sensitive to the choice of the temperature value τ . As shown in Table 4, using a temperature much lower than the ideal value ($\tau = 0.01$) hurts the retrieval results, and a temperature much larger ($\tau = 1$) notably hurts the performance on all tasks. Second, unlike previous work, changing batch size does not lead to substantial change in the classification results. At last, replacing the non-linear projection heads in g_v and g_u with linear layers hurts the retrieval results moderately, suggesting worse representations. However, this is again not reflected notably in the RSNA classification results.

Settings	RSNA Linear (1%, AUC)	Image-Image (Prec@10)	Text-Image (Prec@10)
ConVIRT (default)	90.7	42.9	57.5
$\tau = 0.01$	90.7	40.5	21.0
$\tau = 1$	89.6	25.0	31.0
bs = 16	90.3	40.0	55.8
bs = 128	90.3	39.3	50.3
linear proj.	90.6	40.8	55.8

Table 4: Evaluation results with different hyperparameters, for the RSNA 1% data linear evaluation, image-image retrieval and text-image retrieval tasks. bs represents batch size and *linear proj.* represents using linear projection layers for g_v and g_u . Our default model uses $\tau = 0.1$, $bs = 32$ and non-linear projections.

Limitations. This work mainly focuses on comparing ConVIRT against conventional ImageNet initialization, image captioning-based initialization, and image-only contrastive learning approaches including SimCLR and MoCo to demonstrate the data efficiency and effectiveness of image-text pretraining. We did not compare our method against relevant subsequent studies that extended ConVIRT, such as LoVT (Müller et al., 2021) or GloRIA (Huang et al., 2021), mainly because such comparisons are included in these studies.

7. Conclusion

We presented ConVIRT, an unsupervised method for learning medical visual representations from paired descriptive text. Our method relies on contrasting the image representations with the paired descriptive text via a bidirectional objective between the two modalities. On 4 medical image classification tasks and 2 image retrieval tasks, ConVIRT outperformed other strong in-domain initialization methods, and led to representations with notably higher quality. Compared to ImageNet pretraining, ConVIRT is able to achieve the same level of classification accuracy with an order of magnitude less labeled data. This is especially critical for the healthcare domain where data sparsity is an important issue, and the innovative cross-modality pretraining in ConVIRT is extensible to consider other modalities of data in this domain. We thus hope that ConVIRT continues inspiring future work that makes more efficient use of multi-modal data for medical image understanding.

References

Michael David Abràmoff, Yiyue Lou, Ali Erginay, Warren Clarida, Ryan Amelon, James C Folk, and Meindert Niemeijer. Improved automated detection of diabetic retinopathy on a publicly available dataset through integration of deep learning. *Investigative Ophthalmology & Visual Science*, 57(13):5200–5206, 2016.

- Emily Alsentzer, John Murphy, William Boag, Wei-Hung Weng, Di Jindi, Tristan Naumann, and Matthew McDermott. Publicly available clinical BERT embeddings. In *Proceedings of the 2nd Clinical Natural Language Processing Workshop*, 2019.
- Shekoofeh Azizi, Basil Mustafa, Fiona Ryan, Zachary Beaver, Jan Freyberg, Jonathan Deaton, Aaron Loh, Alan Karthikesalingam, Simon Kornblith, Ting Chen, et al. Big self-supervised models advance medical image classification. In *Proceedings of the IEEE/CVF International Conference on Computer Vision*, pages 3478–3488, 2021.
- Ting Chen, Simon Kornblith, Mohammad Norouzi, and Geoffrey Hinton. A simple framework for contrastive learning of visual representations. In *International Conference on Machine Learning (ICML)*, 2020a.
- Xinlei Chen, Haoqi Fan, Ross Girshick, and Kaiming He. Improved baselines with momentum contrastive learning. *arXiv preprint arXiv:2003.04297*, 2020b.
- Marcella Cornia, Matteo Stefanini, Lorenzo Baraldi, and Rita Cucchiara. Meshed-memory Transformer for image captioning. In *Proceedings of the IEEE/CVF Conference on Computer Vision and Pattern Recognition (CVPR)*, 2020.
- Jeffrey De Fauw, Joseph R Ledsam, Bernardino Romera-Paredes, Stanislav Nikolov, Nenad Tomasev, Sam Blackwell, Harry Askham, Xavier Glorot, Brendan O’Donoghue, Daniel Visentin, et al. Clinically applicable deep learning for diagnosis and referral in retinal disease. *Nature Medicine*, 24(9):1342–1350, 2018.
- Dina Demner-Fushman, Marc D Kohli, Marc B Rosenman, Sonya E Shooshan, Laritza Rodriguez, Sameer Antani, George R Thoma, and Clement J McDonald. Preparing a collection of radiology examinations for distribution and retrieval. *Journal of the American Medical Informatics Association*, 23(2):304–310, 2016.
- Karan Desai and Justin Johnson. VirTex: Learning visual representations from textual annotations. In *Proceedings of the IEEE Conference on Computer Vision and Pattern Recognition (CVPR)*, 2021.
- Jacob Devlin, Ming-Wei Chang, Kenton Lee, and Kristina Toutanova. BERT: Pre-training of deep bidirectional transformers for language understanding. In *Proceedings of the 2019 Conference of the North American Chapter of the Association for Computational Linguistics: Human Language Technologies (NAACL-HLT)*, 2019.
- Sedigheh Eslami, Gerard de Melo, and Christoph Meinel. Does clip benefit visual question answering in the medical domain as much as it does in the general domain? *arXiv preprint arXiv:2112.13906*, 2021.
- Andre Esteva, Brett Kuprel, Roberto A Novoa, Justin Ko, Susan M Swetter, Helen M Blau, and Sebastian Thrun. Dermatologist-level classification of skin cancer with deep neural networks. *Nature*, 542(7639):115–118, 2017.
- Jean-Bastien Grill, Florian Strub, Florent Altché, Corentin Tallec, Pierre Richemond, Elena Buchatskaya, Carl Doersch, Bernardo Avila Pires, Zhaohan Guo, Mohammad Gheshlaghi Azar, Bilal Piot, koray kavukcuoglu, Remi Munos, and Michal Valko. Bootstrap

- your own latent - a new approach to self-supervised learning. In *Advances in Neural Information Processing Systems*, 2020. URL <https://proceedings.neurips.cc/paper/2020/file/f3ada80d5c4ee70142b17b8192b2958e-Paper.pdf>.
- Varun Gulshan, Lily Peng, Marc Coram, Martin C Stumpe, Derek Wu, Arunachalam Narayanaswamy, Subhashini Venugopalan, Kasumi Widner, Tom Madams, Jorge Cuadros, et al. Development and validation of a deep learning algorithm for detection of diabetic retinopathy in retinal fundus photographs. *JAMA*, 316(22):2402–2410, 2016.
- Tanmay Gupta, Arash Vahdat, Gal Chechik, Xiaodong Yang, Jan Kautz, and Derek Hoiem. Contrastive learning for weakly supervised phrase grounding. In *Proceedings of the 16th European Conference on Computer Vision (ECCV)*, 2020.
- Yan Han, Chongyan Chen, Ahmed Tewfik, Ying Ding, and Yifan Peng. Pneumonia detection on chest x-ray using radiomic features and contrastive learning. In *2021 IEEE 18th International Symposium on Biomedical Imaging (ISBI)*, pages 247–251. IEEE, 2021.
- Kaiming He, Xiangyu Zhang, Shaoqing Ren, and Jian Sun. Deep residual learning for image recognition. In *Proceedings of the IEEE Conference on Computer Vision and Pattern Recognition (CVPR)*, 2016.
- Kaiming He, Haoqi Fan, Yuxin Wu, Saining Xie, and Ross Girshick. Momentum contrast for unsupervised visual representation learning. In *Proceedings of the IEEE/CVF Conference on Computer Vision and Pattern Recognition*, 2020.
- Lars Heiliger, Anjany Sekuboyina, Bjoern Menze, Jan Egger, and Jens Kleesiek. Beyond medical imaging—a review of multimodal deep learning in radiology. 2022.
- Olivier J Hénaff, Aravind Srinivas, Jeffrey De Fauw, Ali Razavi, Carl Doersch, SM Eslami, and Aaron van den Oord. Data-efficient image recognition with contrastive predictive coding. In *International Conference on Machine Learning (ICML)*, 2020.
- Shih-Cheng Huang, Liyue Shen, Matthew P Lungren, and Serena Yeung. Gloria: A multimodal global-local representation learning framework for label-efficient medical image recognition. In *Proceedings of the IEEE/CVF International Conference on Computer Vision*, pages 3942–3951, 2021.
- Gabriel Ilharco, Rowan Zellers, Ali Farhadi, and Hannaneh Hajishirzi. Probing contextual language models for common ground with visual representations. In *Proceedings of the 2021 Conference of the North American Chapter of the Association for Computational Linguistics: Human Language Technologies*, pages 5367–5377, Online, June 2021. Association for Computational Linguistics. doi: 10.18653/v1/2021.naacl-main.422. URL <https://aclanthology.org/2021.naacl-main.422>.
- Jeremy Irvin, Pranav Rajpurkar, Michael Ko, Yifan Yu, Silviana Ciurea-Ilcus, Chris Chute, Henrik Marklund, Behzad Haghgoo, Robyn Ball, Katie Shpanskaya, et al. CheXpert: A large chest radiograph dataset with uncertainty labels and expert comparison. In *Proceedings of the AAAI Conference on Artificial Intelligence*, 2019.

- Chao Jia, Yinfei Yang, Ye Xia, Yi-Ting Chen, Zarana Parekh, Hieu Pham, Quoc Le, Yun-Hsuan Sung, Zhen Li, and Tom Duerig. Scaling up visual and vision-language representation learning with noisy text supervision. In Marina Meila and Tong Zhang, editors, *Proceedings of the 38th International Conference on Machine Learning*, volume 139 of *Proceedings of Machine Learning Research*, pages 4904–4916. PMLR, 18–24 Jul 2021. URL <https://proceedings.mlr.press/v139/jia21b.html>.
- Baoyu Jing, Pengtao Xie, and Eric Xing. On the automatic generation of medical imaging reports. In *Proceedings of the 56th Annual Meeting of the Association for Computational Linguistics (ACL)*, 2018.
- Alistair EW Johnson, Tom J Pollard, Seth J Berkowitz, Nathaniel R Greenbaum, Matthew P Lungren, Chih-ying Deng, Roger G Mark, and Steven Horng. MIMIC-CXR, a de-identified publicly available database of chest radiographs with free-text reports. *Scientific Data*, 6, 2019.
- Diederik P Kingma and Jimmy Ba. Adam: A method for stochastic optimization. In *The 2015 International Conference for Learning Representations*, 2015.
- Ruizhi Liao, Daniel Moyer, Miriam Cha, Keegan Quigley, Seth Berkowitz, Steven Horng, Polina Golland, and William M Wells. Multimodal representation learning via maximization of local mutual information. In *International Conference on Medical Image Computing and Computer-Assisted Intervention*, pages 273–283. Springer, 2021.
- Tsung-Yi Lin, Michael Maire, Serge Belongie, James Hays, Pietro Perona, Deva Ramanan, Piotr Dollár, and C Lawrence Zitnick. Microsoft COCO: Common objects in context. In *European Conference on Computer Vision (ECCV)*, 2014.
- Guanxiong Liu, Tzu-Ming Harry Hsu, Matthew McDermott, Willie Boag, Wei-Hung Weng, Peter Szolovits, and Marzyeh Ghassemi. Clinically accurate chest X-ray report generation. In *Machine Learning for Healthcare Conference*, 2019.
- Jiasen Lu, Dhruv Batra, Devi Parikh, and Stefan Lee. ViLBERT: Pretraining task-agnostic visiolinguistic representations for vision-and-language tasks. In *Advances in Neural Information Processing Systems*, 2019.
- Laurens van der Maaten and Geoffrey Hinton. Visualizing data using t-SNE. *Journal of Machine Learning Research*, 9(Nov):2579–2605, 2008.
- Christopher D. Manning, Mihai Surdeanu, John Bauer, Jenny Finkel, Steven J. Bethard, and David McClosky. The Stanford CoreNLP natural language processing toolkit. In *Association for Computational Linguistics (ACL) System Demonstrations*, 2014.
- Yasuhide Miura, Yuhao Zhang, Curtis P. Langlotz, and Dan Jurafsky. Improving factual completeness and consistency of image-to-text radiology report generation. In *Proceedings of the 2021 Conference of the North American Chapter of the Association for Computational Linguistics: Human Language Technologies (NAACL-HLT)*, 2021.
- Philip Müller, Georgios Kaissis, Congyu Zou, and Daniel Rückert. Joint learning of localized representations from medical images and reports. *arXiv preprint arXiv:2112.02889*, 2021.

- Aaron van den Oord, Yazhe Li, and Oriol Vinyals. Representation learning with contrastive predictive coding. *arXiv preprint arXiv:1807.03748*, 2018.
- Alec Radford, Jong Wook Kim, Chris Hallacy, Aditya Ramesh, Gabriel Goh, Sandhini Agarwal, Girish Sastry, Amanda Askell, Pamela Mishkin, Jack Clark, et al. Learning transferable visual models from natural language supervision. In *International Conference on Machine Learning*, pages 8748–8763. PMLR, 2021.
- Maithra Raghu, Chiyuan Zhang, Jon Kleinberg, and Samy Bengio. Transfusion: Understanding transfer learning for medical imaging. In *Advances in Neural Information Processing Systems*, 2019.
- Pranav Rajpurkar, Jeremy Irvin, Aarti Bagul, Daisy Ding, Tony Duan, Hershel Mehta, Brandon Yang, Kaylie Zhu, Dillon Laird, Robyn L Ball, et al. MURA: Large dataset for abnormality detection in musculoskeletal radiographs. In *1st Conference on Medical Imaging with Deep Learning (MIDL)*, 2018a.
- Pranav Rajpurkar, Jeremy Irvin, Robyn L Ball, Kaylie Zhu, Brandon Yang, Hershel Mehta, Tony Duan, Daisy Ding, Aarti Bagul, Curtis P Langlotz, et al. Deep learning for chest radiograph diagnosis: A retrospective comparison of the CheXNeXt algorithm to practicing radiologists. *PLoS Medicine*, 15(11):e1002686, 2018b.
- Olga Russakovsky, Jia Deng, Hao Su, Jonathan Krause, Sanjeev Satheesh, Sean Ma, Zhiheng Huang, Andrej Karpathy, Aditya Khosla, Michael Bernstein, et al. ImageNet large scale visual recognition challenge. *International Journal of Computer Vision*, 115(3): 211–252, 2015.
- Mert Bulent Sariyildiz, Julien Perez, and Diane Larlus. Learning visual representations with caption annotations. In *Proceedings of the 16th European Conference on Computer Vision (ECCV)*, 2020.
- George Shih, Carol C Wu, Safwan S Halabi, Marc D Kohli, Luciano M Prevedello, Tessa S Cook, Arjun Sharma, Judith K Amorosa, Veronica Arteaga, Maya Galperin-Aizenberg, et al. Augmenting the National Institutes of Health chest radiograph dataset with expert annotations of possible pneumonia. *Radiology: Artificial Intelligence*, 1(1):e180041, 2019.
- Karen Simonyan, Andrea Vedaldi, and Andrew Zisserman. Deep inside convolutional networks: Visualising image classification models and saliency maps. In *ICLR Workshop*, 2014.
- Hari Sowrirajan, Jingbo Yang, Andrew Y Ng, and Pranav Rajpurkar. Moco pretraining improves representation and transferability of chest x-ray models. In *Medical Imaging with Deep Learning*, pages 728–744. PMLR, 2021.
- Weijie Su, Xizhou Zhu, Yue Cao, Bin Li, Lewei Lu, Furu Wei, and Jifeng Dai. VL-BERT: Pre-training of generic visual-linguistic representations. In *International Conference on Learning Representations (ICLR)*, 2020.

- Hao Tan and Mohit Bansal. LXMERT: Learning cross-modality encoder representations from transformers. In *Proceedings of the 2019 Conference on Empirical Methods in Natural Language Processing and the 9th International Joint Conference on Natural Language Processing (EMNLP-IJCNLP)*, 2019.
- Ramakrishna Vedantam, C Lawrence Zitnick, and Devi Parikh. CIDEr: Consensus-based image description evaluation. In *Proceedings of the IEEE Conference on Computer Vision and Pattern Recognition (CVPR)*, 2015.
- Yen Nhi Truong Vu, Richard Wang, Niranjana Balachandar, Can Liu, Andrew Y Ng, and Pranav Rajpurkar. Medaug: Contrastive learning leveraging patient metadata improves representations for chest x-ray interpretation. In *Machine Learning for Healthcare Conference*, pages 755–769. PMLR, 2021.
- Linda Wang and Alexander Wong. COVID-Net: A tailored deep convolutional neural network design for detection of COVID-19 cases from chest X-ray images. *arXiv preprint arXiv:2003.09871*, 2020.
- Xiaosong Wang, Yifan Peng, Le Lu, Zhiyong Lu, Mohammadhadi Bagheri, and Ronald M Summers. ChestX-ray8: Hospital-scale chest X-ray database and benchmarks on weakly-supervised classification and localization of common thorax diseases. In *Proceedings of the IEEE Conference on Computer Vision and Pattern Recognition (CVPR)*, 2017.
- Xiaosong Wang, Yifan Peng, Le Lu, Zhiyong Lu, and Ronald M Summers. TieNet: Text-image embedding network for common thorax disease classification and reporting in chest X-rays. In *Proceedings of the IEEE conference on computer vision and pattern recognition (CVPR)*, 2018.
- Xiaosong Wang, Ziyue Xu, Leo Tam, Dong Yang, and Daguang Xu. Self-supervised image-text pre-training with mixed data in chest x-rays. *arXiv preprint arXiv:2103.16022*, 2021.
- Thomas Wolf, Lysandre Debut, Victor Sanh, Julien Chaumond, Clement Delangue, Anthony Moi, Pierric Cistac, Tim Rault, Remi Louf, Morgan Funtowicz, Joe Davison, Sam Shleifer, Patrick von Platen, Clara Ma, Yacine Jernite, Julien Plu, Canwen Xu, Teven Le Scao, Sylvain Gugger, Mariama Drame, Quentin Lhoest, and Alexander Rush. Transformers: State-of-the-art natural language processing. In *Proceedings of the 2020 Conference on Empirical Methods in Natural Language Processing: System Demonstrations*, pages 38–45, Online, October 2020. Association for Computational Linguistics. doi: 10.18653/v1/2020.emnlp-demos.6. URL <https://aclanthology.org/2020.emnlp-demos.6>.
- Kelvin Xu, Jimmy Ba, Ryan Kiros, Kyunghyun Cho, Aaron Courville, Ruslan Salakhudinov, Rich Zemel, and Yoshua Bengio. Show, attend and tell: Neural image caption generation with visual attention. In *International Conference on Machine Learning (ICML)*, 2015.
- Chengxi Zang and Fei Wang. Scehr: Supervised contrastive learning for clinical risk prediction using electronic health records. *arXiv preprint arXiv:2110.04943*, 2021.

Appendix A. Model Implementation and Pretraining Details

Dataset Preprocessing. For the MIMIC-CXR chest radiograph dataset, we use the publicly available JPG version of it.² For both the MIMIC-CXR chest dataset and the Rhode Island Hospital bone image datasets, we resize the image files to have a size of 256 on the larger side. For the textual radiology report data, we first tokenize all reports with the default English tokenizer in version 4.0.0 of the CoreNLP library (Manning et al., 2014). Next, we keep only the *Findings* and *Impression* sections and remove all other sections. We remove all image-text pairings from the dataset where the text section is empty or has less than 3 tokens. This preprocessing procedure gives us about 217k total image-text pairs for pretraining our chest image encoder and 48k total pairs for pretraining our bone image encoder.

Image and Text Encoders. For the image encoder, we use the standard ResNet50 implementation provided by the torchvision library. For the text encoder, we use the BERT base encoder offered by the Transformers library (Wolf et al., 2020) and initialize it with the ClinicalBERT model (Alsentzer et al., 2019) pretrained on the MIMIC clinical notes. We also experimented with training a specialized BERT encoder on a large collection of radiology notes but found that it made no substantial difference in the pretraining results. At pretraining time we freeze the embeddings and the first 6 layers of this BERT encoder, and only fine-tune the last 6 layers for our contrastive task.

Other Hyperparameters. For contrastive learning, we use projection layers with an output dimension $d = 512$, a temperature value $\tau = 0.1$, a loss weight $\lambda = 0.75$. These hyperparameter settings are obtained by comparing the linear evaluation validation scores on the RSNA image classification task with the pretrained ResNet50 weights. For the image transformation family \mathcal{T} , we adopt the implementations offered by the torchvision library.³ We apply *random cropping* with a ratio sampled from $[0.6, 1.0]$; *horizontal flipping* with $p = 0.5$; *affine transformation* with a degree sampled from $[-20, 20]$, max horizontal and vertical translation fractions of 0.1, and a scaling factor sampled from $[0.95, 1.05]$; *color jittering* with brightness and contrast adjustment ratios sampled from $[0.6, 1.4]$; and *Gaussian blur* with $\sigma \in [0.1, 3.0]$. All images are resized to 224×224 after the transformation t_v is applied. Limited by computational resources, we arrive at these image transformation parameters via preliminary experiments rather than a systematic search.

Pretraining Details. At pretraining time, for each dataset, we randomly sample 5k image-text pairs to form a held-out validation set. We use the Adam optimizer (Kingma and Ba, 2015) with an initial learning rate of $1e-4$ and weight decay of $1e-6$. We initialize the image encoder with ImageNet pretrained weights at the beginning of pretraining, and use a fixed batch size of 32. We calculate the validation loss every 5000 steps, and if the validation loss does not decrease after 5 straight evaluation runs, we anneal the learning rate by a factor of 0.5. We stop pretraining after 200 evaluation runs, and save the model checkpoint that achieves the lowest validation loss. For efficiency, we employ mixed-precision training, and for reference, the whole pretraining run on the MIMIC-CXR dataset took about 3 days on a single Titan RTX GPU card.

2. <https://physionet.org/content/mimic-cxr-jpg/2.0.0/>

3. <https://github.com/pytorch/vision>

Appendix B. Image Classification Experiments

We prepared and used the 4 image classification datasets following the procedures below:

1. **RSNA Pneumonia Detection** (Wang et al., 2017; Shih et al., 2019): we used the original version of this dataset available at its Kaggle page,⁴ which contains 25184/1500/3000 annotated images in its training/validation/test sets, respectively.
2. **CheXpert** image classification (Irvin et al., 2019): we downloaded the original version of this dataset from its official website.⁵ Since the original expert-labeled test set of this dataset is hidden and not included as part of the release, we instead followed Raghu et al. (2019) and used the original expert-labeled validation set as our test set, and randomly sampled 5000 images from the original training set for validation purpose. The resulting dataset contains 218414/5000/234 images in each split.
3. **COVIDx** image classification (Wang and Wong, 2020): we prepared this dataset following the scripts provided by its authors.⁶ We used the version 4 of this dataset, the latest version at the time of this work. We additionally randomly sampled 300 images from the training set for validation, resulting in a dataset with 13598/300/300 images in each split.
4. **MURA** bony abnormality detection (Rajpurkar et al., 2018a): we downloaded the original version of this dataset from its website.⁷ Similar to the CheXpert dataset, we again used the original validation set as our test set, and randomly sampled 10% images from the training set for validation, resulting in a dataset with 33078/3730/3197 images in each split. Different from the other 3 datasets, the MURA dataset uses patient-level evaluation, meaning that the prediction results from different images of the same patient needs to be aggregated to produce a final prediction for the patient, which is then scored against the gold patient label. We therefore followed Rajpurkar et al. (2018a) and at test time aggregated result for a patient by averaging the predicted probabilities from multiple images.

Classification Model Training Details. For all models that require ImageNet pre-trained initialization, we use the pretrained weights from torchvision, which achieves an ImageNet top-5 error rate of 7.13%. For all datasets, we first zero-pad the input image to be square, and then resize it to be 224×224. For training, we use the Adam optimizer with an initial learning rate of 1e-3 for the COVIDx task and 1e-4 for the other three tasks. We additionally apply a weight decay of 1e-6 and a dropout before the last classification layer with $p = 0.2$ in all tasks. All classification models are trained with a batch size of 64. In the fine-tuning evaluation setting, we first “warmup” the classification head by freezing the CNN weights and only training the classification head with a learning rate of 1e-3 for 200 steps, after which we unfreeze the CNN weights and fine-tune the entire network together. Validation score is obtained after each epoch of training and we anneal the learning rate

4. <https://www.kaggle.com/c/rsna-pneumonia-detection-challenge>

5. <https://stanfordmlgroup.github.io/competitions/chexpert/>

6. <https://github.com/lindawang/COVID-Net>

7. <https://stanfordmlgroup.github.io/competitions/mura/>

by a factor of 0.5 if the validation score is not improved after 3 epochs. The training is stopped after no validation improvement is observed for 10 straight epochs, at which point the model checkpoint with the highest validation score is evaluated on the test set.

Image Category	Example Textual Query
Atelectasis	Platelike opacity likely represents atelectasis.
Cardiomegaly	The cardiac silhouette is enlarged.
Edema	The presence of hazy opacity suggests interstitial pulmonary edema.
Fracture	A cortical step off indicates the presence of a fracture.
Pleural Effusion	The pleural space is partially filled with fluid.
Pneumonia	A pulmonary opacity with ill defined borders likely represents pneumonia.
Pneumothorax	A medial pneumothorax is present adjacent to the heart.
No Finding	No clinically significant radiographic abnormalities.

Table 5: Example textual queries for each of the 8 categories in the text-image retrieval task.

Appendix C. Image-image Retrieval Dataset Collection

We create the CheXpert 8×200 Retrieval Dataset with 8 different abnormality categories commonly found in Chest radiograph images, including *atelectasis*, *cardiomegaly*, *edema*, *fracture*, *pleural effusion*, *pneumonia*, *pneumothorax* and a special *no finding* category indicating that no obvious abnormality is found in the image. We create the dataset by reusing existing rule-labeled annotations in the CheXpert dataset (Irvin et al., 2019) and additional expert annotations. To create the candidate images for a category label ℓ , we go through all images in the CheXpert training set, and keep an image as a candidate image if only its label for ℓ is positive and all other categories negative. We only include images with this “exclusive positivity” as candidate images, mainly to avoid confounding results between categories in retrieval evaluation.

To create the query images for a category ℓ , we again first pre-select 50 exclusively positive images for this category in the CheXpert training set (with all candidate images excluded). Next, we ask a board-certified radiologist to examine each of the 50 images, and exclude images that: 1) might indicate additional abnormalities other than ℓ , 2) have uncommon color or contrast distortions in the image, or 3) are not well posed during the capture of the image. This procedure is mainly to avoid including query images that have uncommon features and may therefore bias the retrieval evaluation results. At the end, we aggregate the annotation results from the radiologist and keep 10 query images for each abnormality category.

Appendix D. Text-image Retrieval Dataset Collection

For the text-image retrieval dataset, we first reuse all candidate images from the CheXpert 8×200 image-image retrieval dataset described above, with 200 images for each of 8 cate-

gories. To create the textual queries for each abnormality category, we ask a board-certified radiologist to write at least 5 different sentences that he will use to describe this abnormality in radiology reporting. We additionally set the following requirements: 1) the sentences must describe the category with no ambiguity and must not include other categories; 2) the sentences must be diverse from each other; and 3) the sentences should not include very specific anatomic locations or rare clinical observations. At the end, we aggregate the results and keep 5 textual queries for each abnormality category. For reference, we present example textual queries in Table 5.

Appendix E. Experiments on Image-Only Contrastive Learning Methods

We run experiments with two popular image-only contrastive visual representation learning methods: SimCLR (Chen et al., 2020a) and MoCo v2 (Chen et al., 2020b). For a fair comparison, in both experiments we use the exact same set of images from the MIMIC-CXR dataset that we use in the pretraining of our method and the baselines. Our settings for each method are:

- **SimCLR:** We use the open PyTorch implementation available at <https://github.com/sthalles/SimCLR>. For image encoder we use ResNet50. We use cosine similarity in the loss function, set the temperature value to 0.1 and set the output dimension to 128. We use the default image augmentation functions in the paper except for the *color jittering* transformation where we set the saturation and hue adjustment to 0 due to the monochrome nature of our medical images. For training, we use the Adam optimizer with an initial learning rate of $3e-4$ and weight decay of $1e-4$. We set batch size to 128 and run training on a single GPU card for 100 epochs, as we find that increasing the batch size or number of epochs does not lead to improved results. We use the default settings for all other parameters.
- **MoCo v2:** We use the authors' PyTorch implementation available at <https://github.com/facebookresearch/moco>. For image encoder we use ResNet50. We follow the default MoCo v2 setting and use a temperature value of 0.07 and an output dimension of 128. Similarly, we adopt the default image augmentation functions except for the *color jittering* transformation where we set the saturation and hue adjustment to 0. For training, we use the SGD optimizer with a learning rate of 0.0075 and weight decay of $1e-4$. We use a batch size of 64 and a queue size of 4096, and run parallel training on two GPU cards for 100 epochs, as we find that further increasing the batch size or number of epochs does not lead to improved results. During training, we anneal the learning rate by a factor of 0.1 at the 60th and 80th epochs.